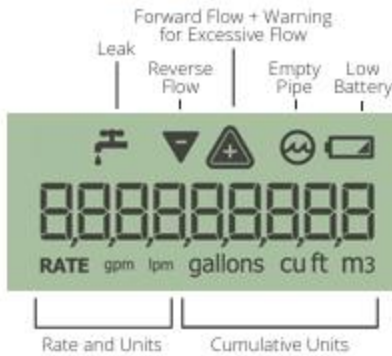


## LCD Display



## Read the Meter

The following table defines the information the meter presents.

Table 2 – Icons and Displays

Icon	Description
	Flow / Leak Indicator shows the direction of flow through the meter:
	ON Water in use.
	OFF Water not in use.
	Leak indicator displays a possible leak:
	OFF No leak indicated.
	Flashing Intermittent leak indicated. Water used during at least 50 of the 96 days of 15-minute intervals, during the previous 24-hour period.
	Continuous ON Continuous leak indicated. Water used during all 96 days of 15-minute intervals, during the previous 24-hour period.

The E-CODER)R900*i* also transmits a high-power fixed network message every seven and one-half minutes on an interleaved basis to an R900 Gateway. If connected to a LoRa network, the E-CODER)R900*i* can transmit a high-power fixed network message every three hours on an interleaved basis.

The E-CODER)R900*i* is designed to offer advantages to utility organizations of all sizes:

- Increases meter reading accuracy
- Eliminates hard-to-read meters
- Protects utility liability by increasing meter reader safety
- Requires no external wiring or programming
- Provides enhanced eight-digit AMR meter reading
- Provides proactive customer service benefits (leak, tamper, and backflow detection)



Figure 1 – E-CODER®)R900i™

## Activating the LCD Using the Solar Panel

---

The E-CODER has a solar panel to power the Liquid Crystal Display (LCD).



Figure 12 – Solar Panel for the E-CODER®)R900i™

The solar panel activates the LCD display when the unit is exposed to a light source. If the LCD does not reactivate as expected, shine a flashlight on the light sensor.




Figure 13 – Activating the E-CODER®)R900i™

## How to Tell if Water is in Use

---

To determine if water is in use, complete the following steps:

1. Check the flow indicator  by closely watching it for two minutes.
2. Determine the following conditions. If the arrow is:
  - Flashing, then water is running very slowly.
  - Continuously ON, water is running.
  - Not flashing, water is not running.

## What to Do if There is a Leak

---


If the E-CODER)R900i detects a leak, check the following to identify the leak source:

- All faucets
- Toilets and valves
- Ice maker and water dispenser
- Yard sand surrounding grounds for a wet spot indicating a leaking pipe

## If a Continuous Leak is Repaired

---


If a continuous leak is found and repaired, complete the following steps.

1. Do not use any water for at least 15 minutes.
2. Check the leak icon .

If the leak indicator changes from continuous ON to flashing, then a continuous leak is no longer indicated.

## If an Intermittent Leak is Repaired

---

If an intermittent leak is found and repaired, check the leak icon  after at least 24 hours. If the leak has been correctly repaired, the leak icon changes from flashing to OFF.

## Common Causes of Leaks

---

If the E-CODER)R900/ leak indicator is flashing or continuously on, it indicates a possible leak. The following table defines common causes of leaks.

Table 3 – Causes of Leaks

Possible Cause of Leak	Intermittent Leak	Continuous Leak
Outside faucet, garden hose, or sprinkler system leaking	✓	✓
Toilet valve not sealed properly	✓	✓
Toilet running		✓
Faucet in kitchen or bathrooms leaking	✓	✓
Ice maker leaking		✓
Soaker hose in use		✓
Leak between the water meter and the house		✓
Washing machine leaking	✓	✓
Dishwasher leaking	✓	✓
Hot water heater leaking		✓
Yard watered for more than eight hours	✓	✓
Continuous pet water device in use		✓
Water-cooled air conditioner or heat pump	✓	✓
Swimming pool filled		✓
Other continuous use of water for 24 hours		✓